

1. 300A 400A 5\_ [ ;
2. ;
3. 24I ;  
Coil power consumption 024W.
4. 100? (1000HDC) 2] H;

at23

at23

|   |                    |
|---|--------------------|
|   | 1K (1@A)           |
|   | 5_                 |
|   | 80_ H (Sf 150A)    |
|   | 7W 1e              |
|   | -40 p55            |
|   | ? 8                |
|   | 3.5Y,10p200HI ,1/2 |
|   | 5 p95 DH           |
|   | 71j 71j 68.5_ _    |
|   |                    |
|   | 100000 (12H/300A)  |
|   | 8-10@_ _           |
| / | /                  |

30\_ e

10\_ e

50HI /60HI 1500HAC/1\_ [

50HI /60HI 1500HAC/1\_ [

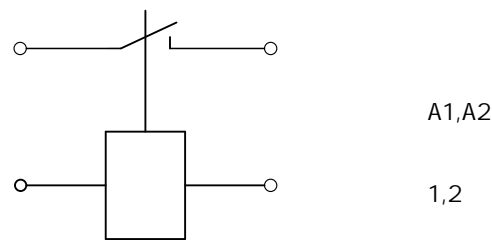
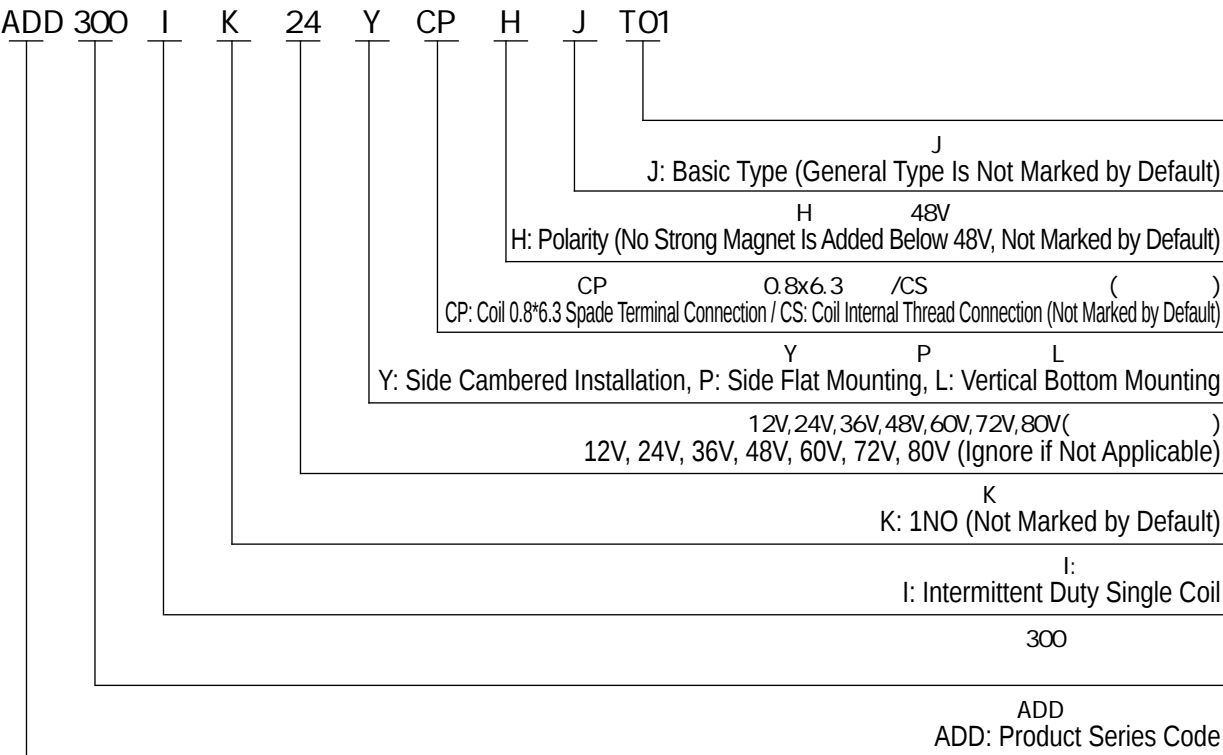
100? 1\_ [

50? 1\_ [

50Y

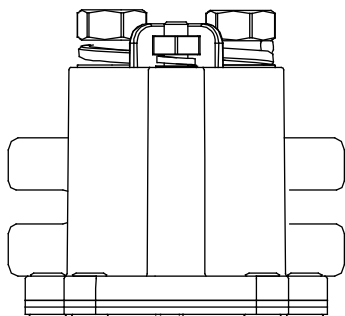
ADD300IJ

| Coil Voltage | Pull-In Voltage | Drop-Out Voltage |           |           |
|--------------|-----------------|------------------|-----------|-----------|
| 12H          | 70% Ge          | 5% -40% Ge       | 6 f 10%   | 24I f 10% |
| 24H          | 70% Ge          | 5% -40% Ge       | 24 f 10%  | 24I f 10% |
| 36H          | 70% Ge          | 5% -40% Ge       | 54 f 10%  | 24I f 10% |
| 48H          | 70% Ge          | 5% -40% Ge       | 96 f 10%  | 24I f 10% |
| 60H          | 70% Ge          | 5% -40% Ge       | 150 f 10% | 24I f 10% |
| 72H          | 70% Ge          | 5% -40% Ge       | 216 f 10% | 24I f 10% |
|              |                 |                  |           |           |
|              |                 |                  |           |           |



ADD300IJ  
ADD300IJ I [d Y D[SYdS\_

## ADD300IYJ



2-? 8  
Load Wiring 2-M8  
8-10@.\_

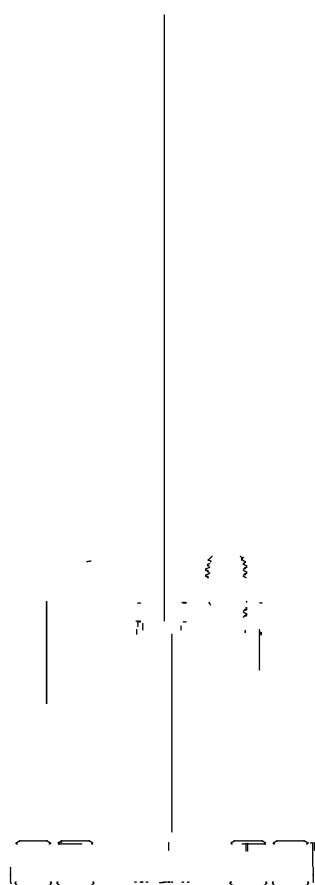
2-? 5  
Load Wiring 2-M5  
2-3@.\_

## ADD300IPJ

2-? 8  
Load Wiring 2-M8  
8-10@.\_

2-? 5  
Load Wiring 2-M5  
2-3@.\_

ADD300ILJ



2-? 8  
Load Wiring 2-M8  
8-10@.\_

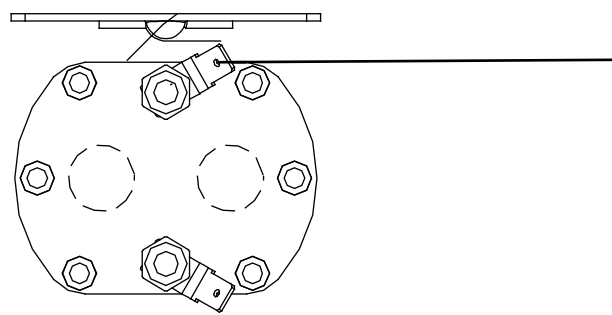
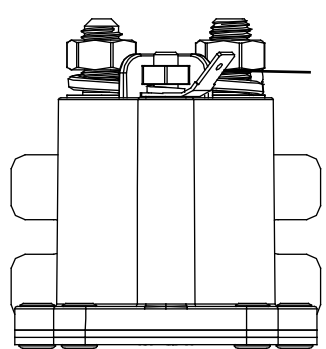
2-? 5  
Load Wiring 2-M5  
2-3@.\_

ADD300IYCPJ

2-? 8  
Load Wiring 2-M8  
8-10@.\_

F=0.8j 6.3  
Coil Wiring T=0.8\*6.3

ADD300IPCPJ



2-? 8  
Load Wiring 2-M8  
8-10@.\_

F=0.8j 6.3  
Coil Wiring T=0.8\*6.3

ADD300ILCPJ

2-? 8  
Load Wiring 2-M8  
8-10@.\_

F=0.8j 6.3  
Coil Wiring T=0.8\*6.3

1.

2.

3.

When installing and using this product, regardless of wiring or fixed installation, it is required to use anti-loose spring washers.

4.

5.

Do not install the contactor in places with strong magnetic fields (such as transformers or strong magnets), or close to objects

6. 30U\_

It is forbidden to use the product that have been dropped from a high place (height $\geq$ 30cm).

7.

8.

It is forbidden to use the product beyond the rated electrical life. When the rated electrical life is reached, although the product

9.

10.

AOKAI only does the resistive electrical life verification and quality assurance. When the product is used in an environment

11.

12.