

**Features**

1. 200A ;  
Continuous 200A load.
2. ;  
It has one set of normally open contacts.

at23  
**Performance Parameters** at23

Contact Arrangement	1K (1NO)	
	0.5m	
	80mV (at 200A)	
	7le, 1s	30ms
	-40 ~85	30ms
	M8	50Hz/60Hz 1500VAC/1min
	3.5g,10~200Hz,1/2	50Hz/60Hz 1500VAC/1min
	5 ~95 RH	100M 1min
	85x56x86mm	50M 1min
	20000	5g
	6-10N.m	
/	/	

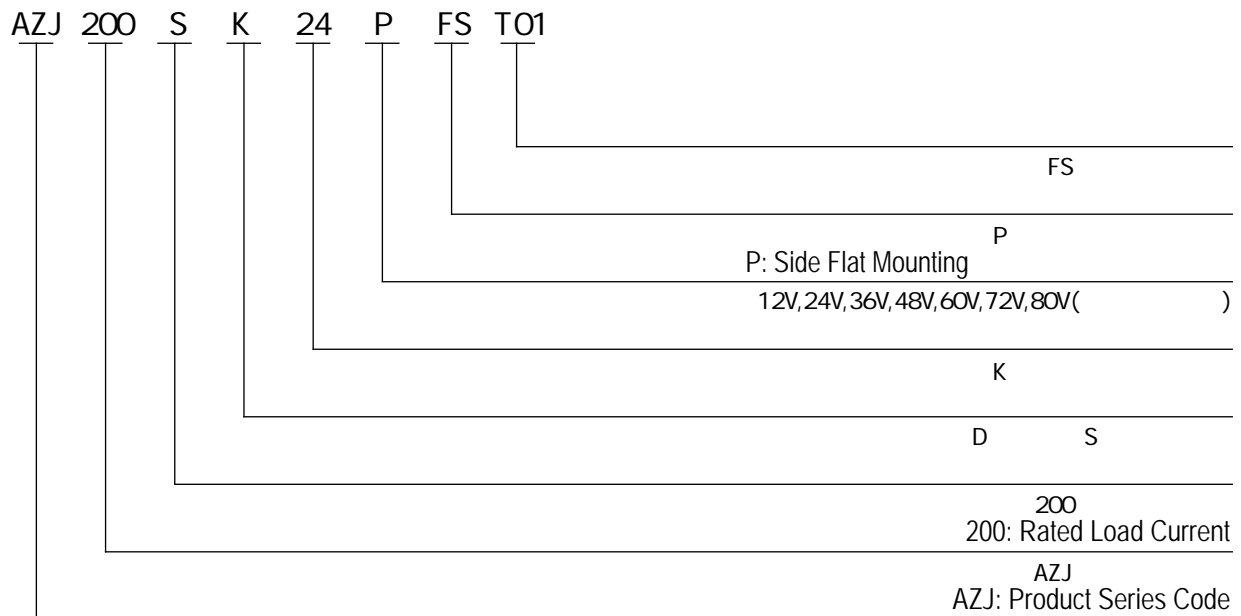
## AZJ 200S AZJ200S Coil Parameters

			Coil Resistance	Coil Power Consumption
12V	70% Us	5% -40% Us	16 ± 10%	9W± 10%
24V	70% Us	5% -40% Us	63 ± 10%	9W± 10%
36V	70% Us	5% -40% Us	144 ± 10%	9W± 10%
48V	70% Us	5% -40% Us	256 ± 10%	9W± 10%
60V	70% Us	5% -40% Us	400 ± 10%	9W± 10%
72V	70% Us	5% -40% Us	576 ± 10%	9W± 10%

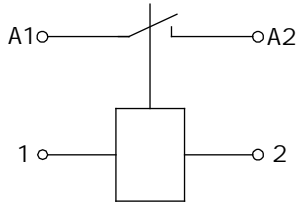
## AZJ 200D AZJ200D Coil Parameters

			Coil Resistance		Starting Power	Holding Power
			Starting	Holding		
12V	70% Us	5% -40% Us	2 ± 10%	48 ± 10%	72W± 10%	4W± 10%
24V	70% Us	5% -40% Us	7.5 ± 10%	190 ± 10%	75W± 10%	4W± 10%
36V	70% Us	5% -40% Us	17.5 ± 10%	430 ± 10%	75W± 10%	4W± 10%
48V	70% Us	5% -40% Us	31 ± 10%	768 ± 10%	75W± 10%	4W± 10%
60V	70% Us	5% -40% Us	48 ± 10%	1200 ± 10%	75W± 10%	4W± 10%
72V	70% Us	5% -40% Us	68 ± 10%	1500 ± 10%	75W± 10%	4W± 10%

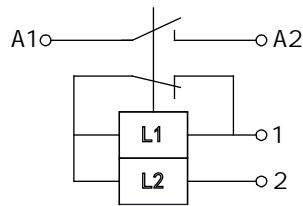
## Model Coding



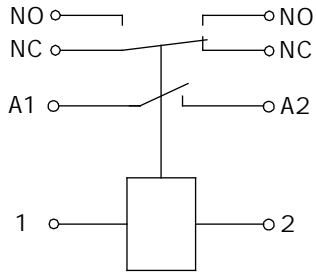
## Wiring Diagram



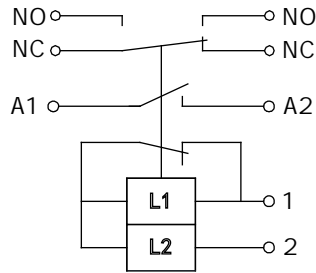
AZJ200S( )  
AZJ200S Wiring Diagram  
Without Auxiliary Switch



AZJ200D( )  
AZJ200D Wiring Diagram  
Without Auxiliary Switch



AZJ200S( )  
AZJ200S Wiring Diagram  
with Auxiliary Switch



AZJ200D( )  
AZJ200D Wiring Diagram  
with Auxiliary Switch

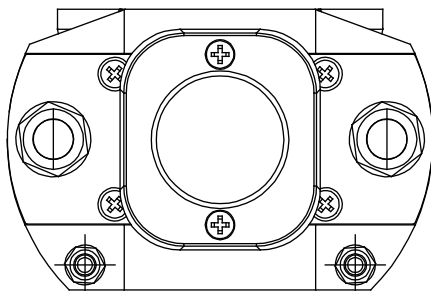
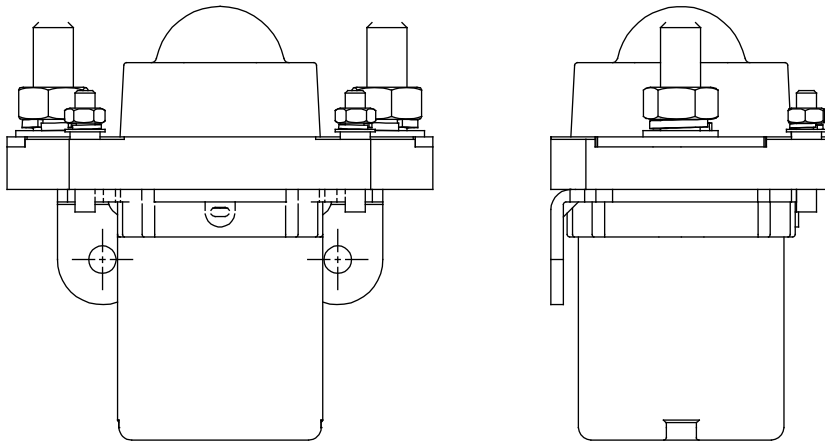
NC  
NC Auxiliary Switch Normally  
Closed Contact

NO  
NO Auxiliary Switch Normally  
Open Contact

A1,A2  
A1, A2 Main Terminal Wiring

1,2                    12-72V  
1, 2 Coil Wiring 12-72V

## Outline Installation Dimension Drawing



2-M8

6-10N.m 12N.m Max

2-M4

1.2-2N.m 2.0N.m Max



## Usage Cautions

1.

the samples provided by AOKAI and the corresponding signed and controlled specification.

2.

to obtain more technical support.

3.

4.

5.

with thermal radiation. It is recommended to use it with a cooling fan.

6.

30cm

7.

8.

9.

10.

tion device.

11.

12.

It is strictly prohibited to wiring when power on.