



**fE**  
Features

1. 125A ;  
Continuous 125A load.
2. ;  
It has one sets of normally open and one sets of normally closed contacts.

at23

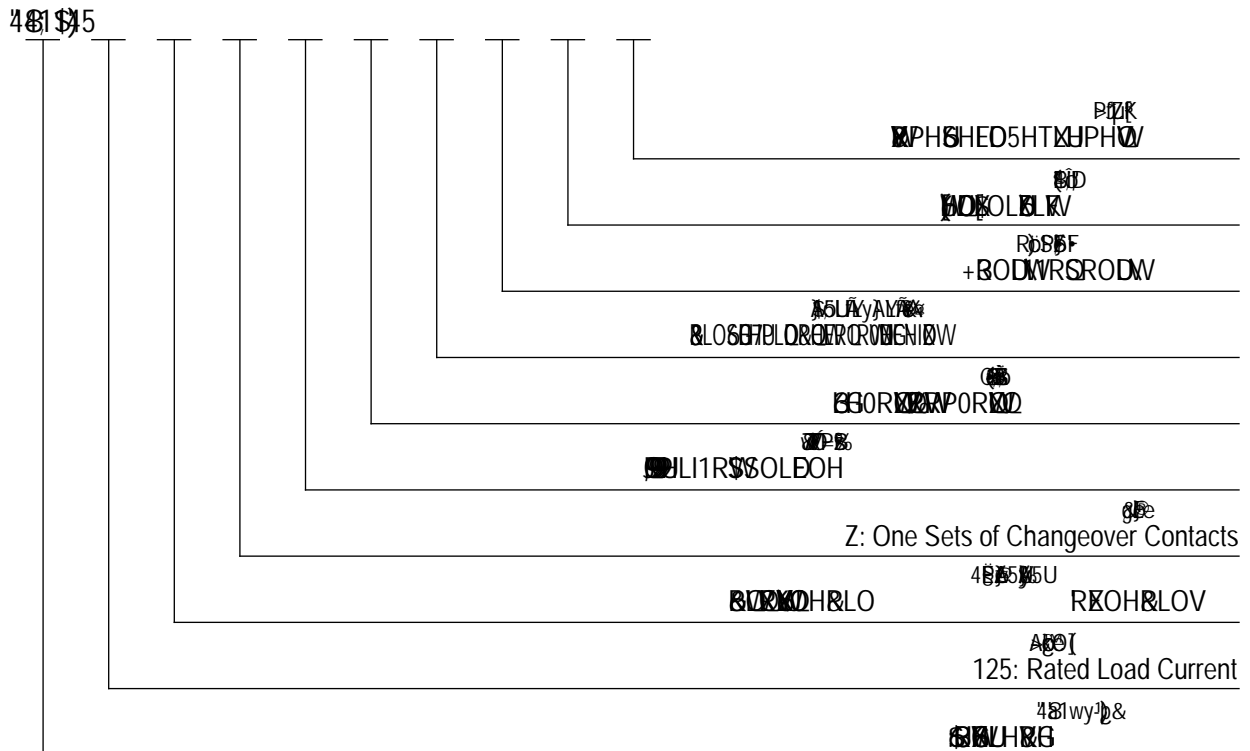
Performance Parameters

|                     |                   |                        |
|---------------------|-------------------|------------------------|
| Contact Arrangement |                   |                        |
|                     | 0.5m              |                        |
|                     | 80mV(at 125A)     |                        |
|                     | 7le, 1s           | 30ms                   |
|                     | -40 ~-65          | 30ms                   |
|                     | M8                | 50Hz/60Hz 1000VAC/1min |
|                     | 3.5g,10~200Hz,1/2 | 50Hz/60Hz 1000VAC/1min |
|                     | 20 ~90 RH         | 100M 1min              |
|                     | 57x48x89mm        | 50M 1min               |
|                     | 6000              |                        |
|                     | 8-10N.m           |                        |

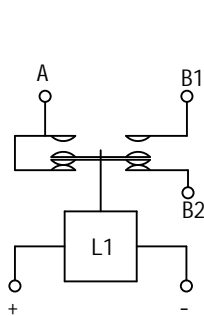
# ASW125SZ Coil Parameter

| Ec kn' J c nh cig | Rkemwr' J c nh cig | J 8 E8 tc rc wh' J c nh cig | J 8 Holding Current | Coil Power Consumption |
|-------------------|--------------------|-----------------------------|---------------------|------------------------|
| 12V               | 70% Us             | 10% Us                      | 1A                  | 7.15W                  |
| 24V               | 70% Us             | 10% Us                      | 0.6A                | 7.15W                  |
| 36V               | 70% Us             | 10% Us                      | 0.6A                | 7.15W                  |
| 48V               | 70% Us             | 10% Us                      | 0.5A                | 7.15W                  |
| 60V               | 70% Us             | 10% Us                      | 0.25A               | 7.15W                  |
| 72V               | 70% Us             | 10% Us                      | 0.2A                | 7.15W                  |

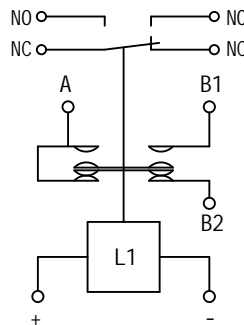
## Model Coding



## Wiring Diagram



Wiring Diagram Without Micro Switch

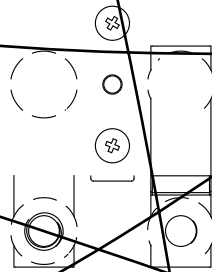


Wiring Diagram with Micro Switch

NC  
PE: Cwzknkctm' Ec b h ceh  
NO  
PC: Cwzknkctm' Ec b h ceh  
+ -  
+ Coil Terminals

# Outline Installation Dimension Drawing

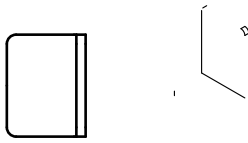
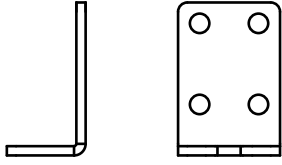
ASW125SZ



2-M8  
Nc cX K ktkb i 4/0:  
8-10N.m  
Vc tswg :/32P0o

T=0.8x6.3  
Ec kn K ktkb T V1 20.805  
Spade Terminal

# Outline Installation Dimension Drawing



## Usage Cautions

1.

V\ ku' X c ewogb h' ku' c b nm' hc t' ewuh c ogt' ugngeh kc b' tghgtgb eg. CC MCK' \ cu' h tk  
kb' h \ ku' X c ewogb h O' Rtc X weh' urgekhech kc b u' cb X' rctcogh gtu' ocm' dg' e\ cb ig)  
kb ec b ukuh gb h' dgecwug' c h' b c h' wrX ch gX' kb' h kogO' Hc t' h \ g' urgekhe' rctcogh  
h \ g' ucorngu' rtc xkX gX' dm' CC MCK' cb X' h \ g' ec ttgurc b X kb i' ukib gX' cb X' ec b h t

2.